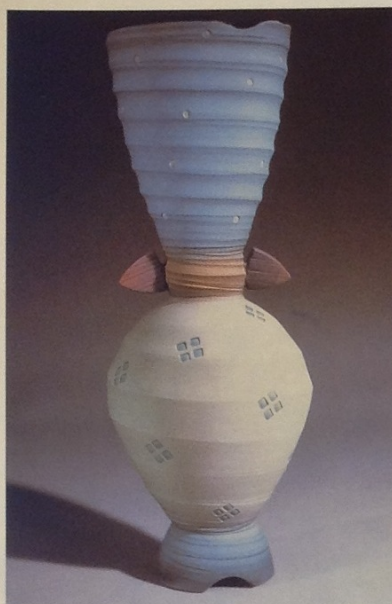


Ceramics

Centering & Throwing II 9



Jim Kemp, Greenwood, IN, Cone 01



Open the cylinder slightly. The walls should be thick. Pull straight across at a right angle to create a flat bottom. Again, remember to allow the clay to make one complete revolution before releasing your hands.



With your hands still at 4 o'clock, use your fingertips to gently squeeze and lift clay straight up.



Repeat this step until the walls are approximately $\frac{3}{8}$ -inch to $\frac{1}{4}$ -inch thick.



If the top is uneven, trim with a needle tool. Smooth the top with a wet chamois or fingers. (See steps 4-6 of Poster #10)



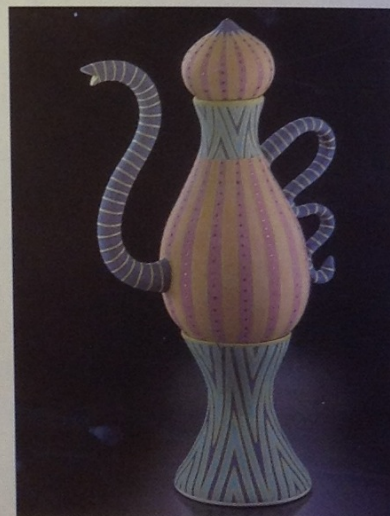
Using a wooden trimming tool, cut away the excess clay at the base of the cylinder.



Using a taut wire, press the wire with your thumbs against the bat and pull toward you to cut the cylinder from the bat. The wheel should be moving very slowly. A well-thrown cylinder has uniform thickness from top to bottom, as shown above.



Wooden tools for modeling and trimming.



Ernie Alt, Marlborough, Massachusetts, Cone 05