

# Ceramics

## Coil Building II

4



Don McCann, Tyrone, GA, Cone 05



Debra Fitts, Roswell, GA, Cone 05



Wooden, metal, rubber, and plastic ribs for shaping.



Use a cut template to help guide you in creating your coil vase. To make the shape wider, place the coil on the outer edge of the pot and join as before. To make the shape smaller, place the coil on the inner edge of the pot and join as before.



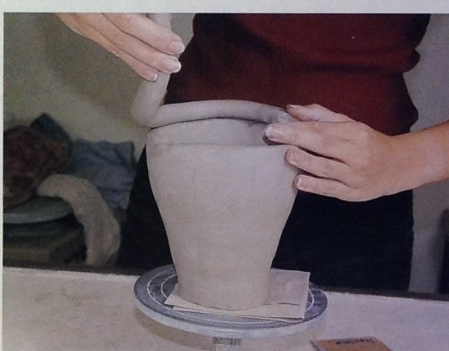
The template will tell you when to make the shape wider or narrower and will help to keep the shape uniform on all sides.



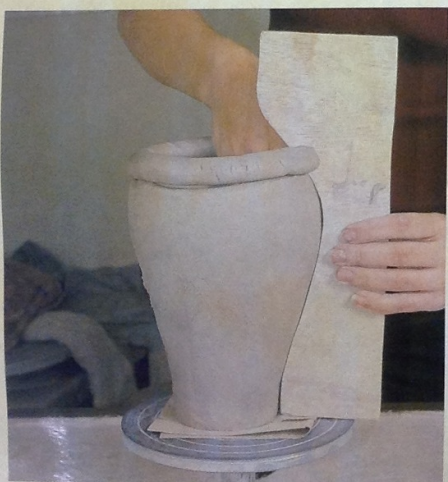
Continue the process of rolling the coil, scoring and slipping the edge, attaching the coil, and pulling down the edge of the coil on the inside and outside.



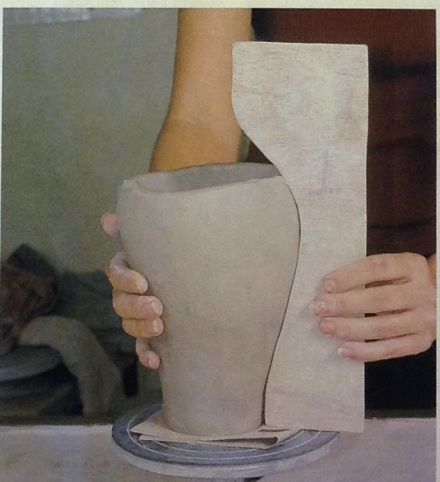
Smooth the outside of the pot using a finishing rib or scraper. Turn the pot on the banding wheel to be sure the shape is symmetrical.



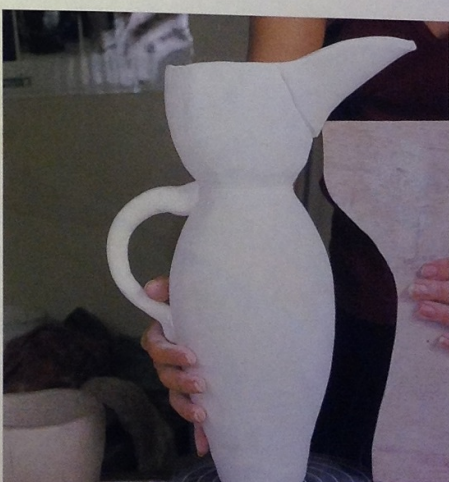
Continue rolling coils, scoring and slipping the edges, attaching the coils, and smoothing the edges of the pot.



Continue building the vase to fit the template.



Add a last coil to create the rim.



A coil-built pitcher with added spout and handle.