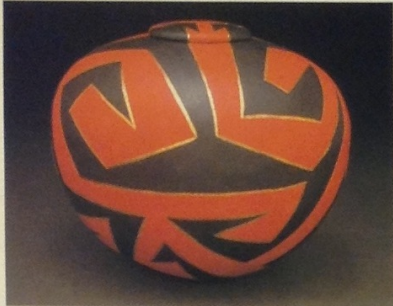


# Ceramics

## Pinch Pots

2



Roddy Browne, Pinch Pot, Tampa, FL, 2000-05



Jimmy Clark, Philadelphia, PA, 2000-05

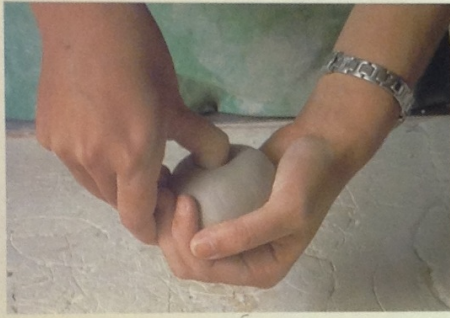


Series photo, Spruce Creek High School, Port Orange, FL, Tim Ludwig, Art Teacher

Begin with a small ball of wedged and kneaded clay about the size of an orange.



Patricia Breenbach, Pinch Pot, NC, 2000-05



Open the clay by placing your thumb into the center of the ball of clay and push.



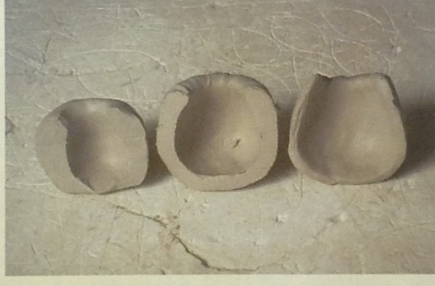
Begin pinching from the bottom and rotating the ball of clay.



Keep the opening the size of your thumb by gently squeezing in the top.



Use your hands to shape and/or smooth the surface.



Keep the thickness of the sides even, approximately 1/4 inch.



A paddle can be used to alter the shape of the pot.



When the basic form is complete, additions to the pot can be added.



Roll out a thick short coil and insert a dowel through the center. Roll out the dowel to create a neck for the pot.



Score the top of the pot and the bottom of the neck. Use slip or vinegar to attach the neck to the base.