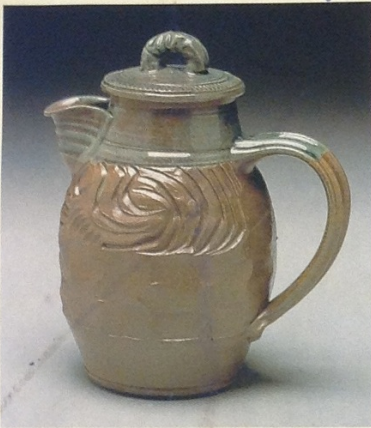


# Ceramics Wedging

1



Cynthia Brinigo, Penland, NC, Wood Fire



Two different color clays were used as an example only to show how proper wedging blends the clay.



Clay is cut in half and put back together on the wedging table before kneading.



Knead clay using the heels of your hands as you would knead bread.



Push clay down and forward and then rock it back up. Repeat.



Slice clay in half again.



Repeat the process of cutting and kneading.



Knead again.



Example shows how clay is beginning to blend.



Continue the process of cutting and kneading to assure that the clay is well blended.



With clay of one color, it is more difficult to see the blending process so it is important to repeat the kneading process numerous times.



Well-wedged clay has no air pockets and is evenly plastic.